

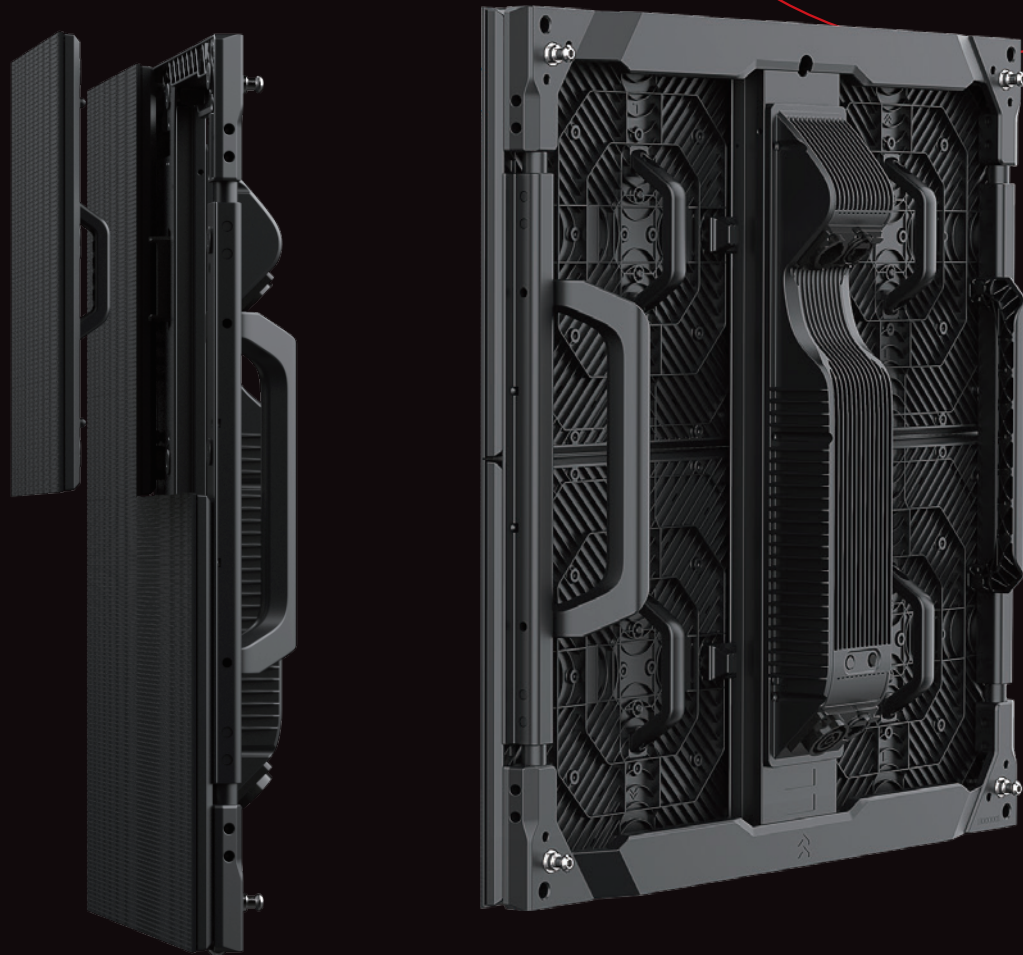


DIAMOND 2.6

LIGHTWEIGHT

SMALL-PITCH SOLUTION

Release time: Jun. 2018

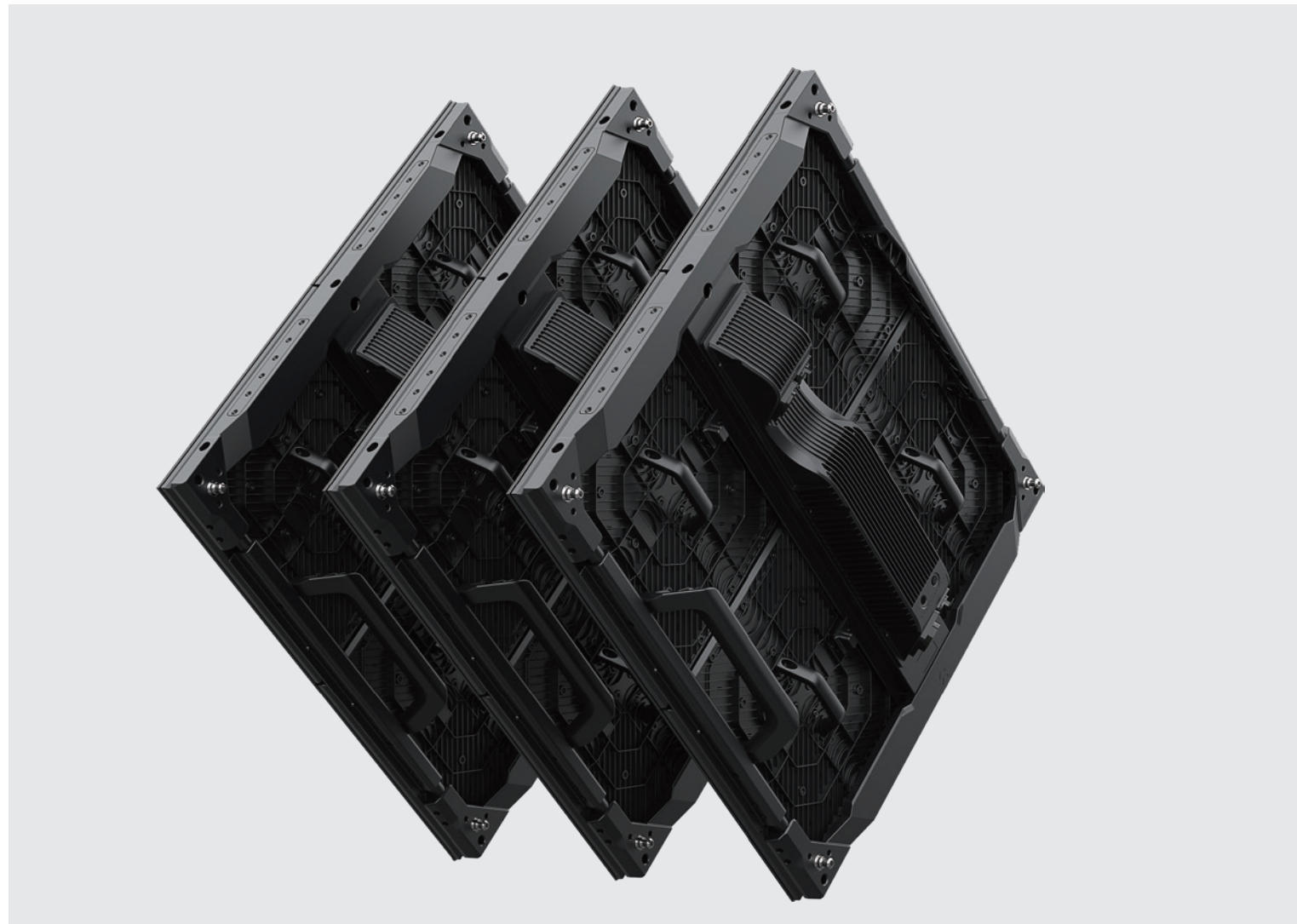


Diamond 2.6 by ROE Visual offers a lightweight, small-pitch alternative

The lightweight Diamond 2.6(DM2.6) small-pitch LED panel incorporates magnesium alloy frame design for an easy-to-stack or hang solution. It's available in both flat or curved configurations and suitable for indoor configurations. The DM2.6 is the ideal cost-effective LED display solution for rental, staging and fixed applications.

Diamond 2.6

Lightweight, small-pitch solution



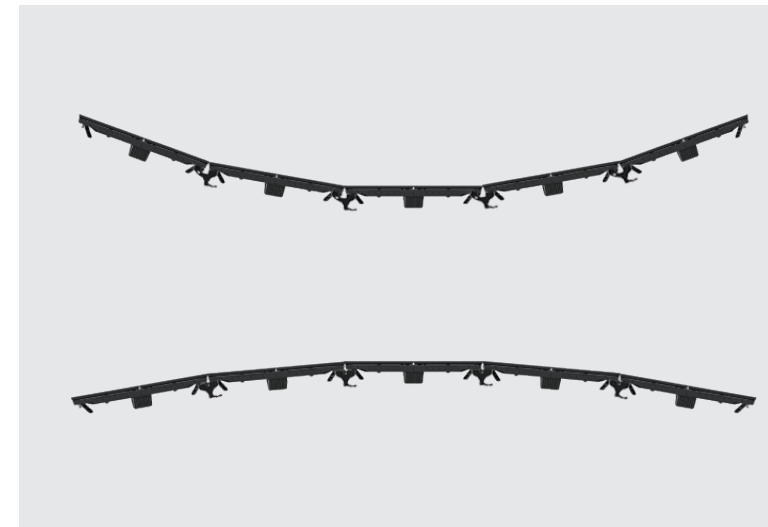
Ultra-Lightweight

Diamond 2.6 panels measure 500x500mm and weigh less than 5.5kg (12-lbs) per panel. Lightweight magnesium alloy frame ensures extreme durability.



Superb Visual

The sleek design with Black LED's adds high contrast and brightness for a vivid viewing experience.



Curving Capability

Concave and convex curving capabilities provide expanded flexibility to realize uniquely creative stage design.



Magnet-assisted Assembly

Magnets are integrated in to the Diamond panel frame, offering easy setup in both hanging or stacking configurations.

Specifications

Diamond	DM2.6
Pixel Pitch in mm	2.60
Pixel Density px/m²	147,456
Pixels (H x V) px/panel	192 x 192
LED Configuration	Black SMD (NationStar 1515)
Max. Brightness (Calibrated)	1,500 nits
Gray Scale (Input to Output)	16 bit
Refresh Rate	1,920 Hz
Scan	1/16
Hoz. Viewing Angle	140°
Vert. Viewing Angle	140°
Transparency	Solid
PanelSize (W x H x D)	500 x 500 x 81 mm / 19.7" x 19.7" x 3.2"
Frame Material	Magnesium
Weight/panel	5.5 kg; 12.16 lbs
Max. Hanging*1	20 tiles
Max. Stacking*2	8 tiles
Curving (Concave & Convex)	Max. Concave 10°/Max. Convex 5°
Max. Power/panel	180 W
Processor	Evision/Brompton
Operational Temp / Humidity	-20°~ 45°C, 10~90%RH / -4°~113°F, 10~90%RH
IP Rating	IP 40, Indoor
Lifetime	≥50,000 hrs

Dimensions

